

snúza[®] **PICO 2**

Quick Start Guide
快速入门指南

Thank you
for choosing

snuza[®]

and for letting us be a part of your
parenting journey.

We would love to see a photo of your little
one wearing their Snuza monitor!

Please tag us on social media:



@snuzamonitors

We'd greatly appreciate your review on
our social media platforms or via
support@snuza.com.

Your feedback helps to further our work in
promoting safe sleep for infants worldwide.

IMPORTANT: Register your Snuza monitor to
ensure that it is not a pre-owned device. Follow the
instructions in the Warranty section of this booklet.

The Snuza Family
www.snuza.com

30 Days extended warranty

IMPORTANT: proof of purchase is required to validate warranty.

This monitor comes with a 1-year warranty that starts from the date of original purchase, verified by a sales receipt. We'll extend your warranty by 30 days when you register your device within 7 days of purchase.

Here's how to extend your warranty:

1. A. Register as a user on snuza.com/register, follow the prompts to complete registration and add your device, **OR**
B. If you have already registered, log in and scan the QR code below to register your device, or navigate to www.snuza.com/account/device/add/.
2. Enter your device's serial number and your child's details.
3. Upload your proof of purchase and enter the purchase date, and save.

To get product support:

1. Log into snuza.com.
2. Go to your product's dashboard and click on your device's serial number.
3. Click on the 'Get Support' button.
4. Enter your product support query, then click the 'Send' button.
5. We will be in contact via email to try and resolve your issue.
6. If we are unable to resolve the issue, then the warranty claim process becomes available.
7. You can do this either on your product's dashboard by clicking the 'Report fault' button or the link provided in the email that you will receive.



If you have any feedback or questions, please contact us via your product's dashboard by clicking the 'Send a message' button or email us at support@snuza.com.

Welcome to the Snuza Family!
The Snuza Team

Pico 2 Quick Start Guide

Snuza Connect App Setup:

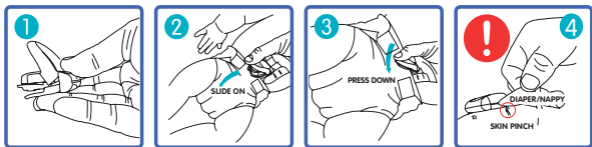
1. Download the Snuza Connect app.
2. Follow the prompts to register.
3. Activate your account via the e-mail link.
4. Once activated, add the Pico 2 to your account.
5. You can find the serial number on the side of the Pico 2 by lifting its top lever.

Snuza Pico 2 Device Setup:

Charge your Snuza Pico 2

1. Attach the micro USB power cord to the charging cradle base. A red light will appear on the charging cradle base to indicate it has power.
2. Open the charging cradle lid and place your Pico 2 in the correct position.
3. Close the lid.
4. The battery light on the Pico 2 will flash while charging and turn solid green when fully charged.

Attach your Snuza Pico 2:



1. Lift the Pico 2's top lever to release the clip. **(fig.1)**
2. Fold over the top edge of the nappy/diaper and attach the Pico 2 to your child's nappy/diaper. Keep your fingers between the Pico 2 and child's skin. Check that the Pico 2 has a snug fit. **(fig.2)**
3. Ensure that the clip is properly closed once placed. **(fig.3)**
4. Check that no skin is pinched by gently sweeping your fingers between the skin and clip. **(fig.4)**

Switch your Pico 2 on and start monitoring:

1. Switch the Pico 2 on by briefly pressing the power button.
2. All indicator lights will flash and a start-up tone will be heard.
3. Alternatively, switch the Pico 2 on by pressing the power button in the app.
The start-up tone will be silent if controlled via the app.
4. Only use the Pico 2 when your child is in a motionless bed/cot.

Scan the QR code for the full instruction manual



IMPORTANT: Update your Pico 2's firmware before use



For support contact us through support@snuza.com

Regulatory Information: FCC compliance statement for Pico and charging cradle. This device complies with Part 15 of the FCC Rules. Operation is subject to the following two conditions: (1) this device may not cause harmful interference (2) this device must accept any interference received, including interference that may cause undesired operation. This device meets the FCC requirements for RF exposure in public or uncontrolled environments. Canadian regulatory statement for Pico and charging cradle. This device complies with Industry Canada licence-exempt RSS standard(s). Operation is subject to the following two conditions: (1) this device may not cause interference (2) this device must accept any interference, including interference that may cause undesired operation of the device. CAN ICES-3 (B)/NMB-3(B). This device complies with the safety requirements for RF exposure in accordance with RSS-102 Issue 5 for portable use conditions. **Disclaimer:** Customers use this monitor at their own risk. Snuza International (Pty) Ltd, its members, employees, agents, contractors, representatives, manufacturers, distributors and associates ("SNUZA") shall not be held liable for any loss, damage or injury suffered by the customer or any other person arising from, or in connection with, the use or manufacture of the monitor, including loss, damage or injury suffered by the customer or any other person as a result of any defects in respect of the monitor, and all warranties, and any other liability from whatsoever cause arising, are hereby excluded. The customer hereby indemnifies Snuza International (Pty) Ltd in respect of any such liability. **Guarantee:** Snuza International (Pty) Ltd guarantees this product to be free from defects in materials and workmanship for a period of 12 months from the original date of purchase, verified by a sales receipt.




感谢
您的选择

snuza®

让我们成为您育儿之旅的一部分。

我们很乐意看到您的宝宝穿戴 Snuzza 监护器的照片！

欢迎在社交媒体上标记我们：

 @snuzamonitors

我们非常感谢您在我们的社交媒体平台、亚马逊或通过邮件 support@snuza.com 发表评论。

您的反馈有助于进一步推动我们促进全球婴儿安全睡眠的工作。

重要提示：注册您的 Snuzza 监护器以确保它不是二手设备。请遵循本手册“保修”部分的说明。

Snuza 系列产品
www.snuza.com

延长30天的保修期

重要提示：需要提供购买证明才能验证保修。该监护器享有自原始购买之日起 1 年的保修，并由销售收据验证保修。当您在购买后 7 天内注册设备时，我们会将您的保修期延长 30 天。

下面是如何延长您的保修期：

1. A. 在 snuza.com/register 上注册为用户，按照提示完成注册并添加您的设备，或者 B.
如果您已经注册，请登录并扫描下面的二维码来注册您的设备，或导航访问 www.snuza.com/account/device/add/。
2. 请输入您设备的序列号和您宝宝的详细信息。
3. 上传您的购买凭证，输入购买日期，并保存。

获得产品支持：

1. 登录 snuza.com。
2. 转到产品的主页并单击设备的序列号。
3. 点击“帮助”按钮。
4. 输入您产品支持询问文档，并点击“发送”按钮。
5. 我们将通过电子邮件与您联系，尝试解决您的问题。
6. 如果我们无法解决问题，则可以进行保修索赔流程。
7. 您可以在产品的主页上单击“报告故障”按钮或在您将收到的电子邮件中提供的链接来执行此操作。



如果您有任何反馈或问题，请通过产品主页点击“发送消息”按钮与我们联系，或发电子邮件至 support@snuza.com。

欢迎来到Snuza 家族！
Snuza 团队

Pico 2 快速入门指南

Snuza Connect 应用程序设置：

1. 下载 Snuza Connect 应用程序。
2. 按照提示进行注册。
3. 通过电子邮件链接激活您的帐户。
4. 激活后，将 Pico 2 添加到您的帐户。
5. 您可以在 Pico 2 盒子的上盖侧面找到该序列号。

Snuza Pico 2 设备设置：

为 Snuza Pico 2 充电

1. 将USB 电源线连接至充电座底座。充电座底座上会出现红灯，表示已通电。
2. 打开充电座盖并将 Pico 2 放置在正确的位置。
3. 合上盖子
4. Pico 2 充电时电池指示灯会闪烁，充满电后呈绿色常亮状态。

穿戴您的 Snuza Pico 2



1. 抬起 Pico 2 的顶部开合杆以释放夹子。(图1)
2. 折叠尿布/纸尿裤的上边缘，并将 Pico 2 夹到孩子的尿布/纸尿裤上。将手指放在 Pico 2 和孩子的皮肤之间。检查 Pico 2 是否紧密贴合皮肤。(图2)
3. 确保夹子放置适当后闭合夹子。(图3)
4. 用手指轻轻在皮肤和夹子之间扫过，检查是否有皮肤被夹住。(图4)

打开 Pico 2 并开始监护

1. 短按电源按钮打开 Pico 2。
2. 所有指示灯都会闪烁，并会听到启动音。
3. 或者，按下应用程序中的电源按钮打开 Pico 2。如果通过应用程序控制，启动音将是静音的。
4. Pico 2 仅用于您的孩子位于静止的床/婴儿床上时。

扫描二维码获取完整使用说明书

重要提示：使用前更新 Pico 2 的固件



如需支持，请通过 support@snuza.com 联系我们

监管信息：Pico 和充电座的 FCC 合规性声明。本设备符合 FCC 规则第 15 部分：操作需满足以下两个条件：(1) 本设备不会造成有害干扰 (2) 本设备必须接受收到的任何干扰，包括可能导致意外操作的干扰。该设备符合 FCC 对公共或不受控制环境中射频暴露的要求。加拿大针对 Pico 和充电座的监管声明：本设备符合加拿大工业部许可证 RSS 标准。操作须满足以下两个条件：(1) 该设备不得造成干扰 (2) 该设备必须接受任何干扰，包括可能导致设备意外操作的干扰。CAN ICES-3 (B) / NMB-3(B)。本设备符合 RSS-102 第 5 版关于便携式使用条件的射频暴露安全要求。**免责声明：**客户使用此监护器需自行承担风险。Snuza International (Pty) Ltd、其成员、员工、代理商、承包商、销售代表、制造商、分销商和联营公司 ("SNUZA") 对客户或任何其他他人因以下原因遭受的任何损失、损害或伤害不承担责任：监护器的使用或制造有关的损失，包括客户或任何其他人与监护器有关的任何缺陷而遭受的损失、损坏或伤害，以及所有质保和任何其他原因带来的法律责任，在此一并免除。客户在此免除 Snuza International (Pty) Ltd 的任何此类责任赔偿。**质保：**Snuza International (Pty) Ltd 保证本产品自原始购买之日起 12 个月内不存在材料和工艺缺陷，本质保由销售收据验证。



BP2CH101

